

鋁製梯型(附底板)電纜線槽

**Aluminum Solid Bottom Type
Cable Tray**

欣歐企業股份有限公司

SENCO ENTERPRISE CO., LTD.

831 高雄市大寮區光華路 470 巷 138 號

電話: (07)788-6336

傳真: (07)788-6339



No.138, Lane 470, Guanghua Rd., Daliao District,
Kaohsiung City 831, Taiwan.

website: www.senco.com.tw

e-mail: senco@ms18.hinet.net

電纜線槽製造標準

一. 製造標準

1. CNS 13303 C4466 金屬電纜線架系統
2. NEMA VE1-1996 METALLIC CABLE TRAY SYSTEMS

二. 材料標準

1. CNS 1244 熱浸法鍍鋅鋼片
2. CNS 10804 烤漆熱浸鍍鋅鋼片及鋼捲
3. CNS 2068 鋁及鋁合金之合金種類及鍊度符號
4. CNS 2253 鋁及鋁合金之片及板
5. CNS 2257 鋁擠型條
6. CNS 8499 冷軋不銹鋼鋼片及鋼板

三. 表面處理標準

1. CNS 8590 鋁及鋁合金之硫酸陽極氧化處理作業
2. CNS 10007 鋼鐵之熱浸法鍍鋅
3. CNS 770 烤漆
4. CNS 4938 環氧樹脂漆

四. 檢驗標準

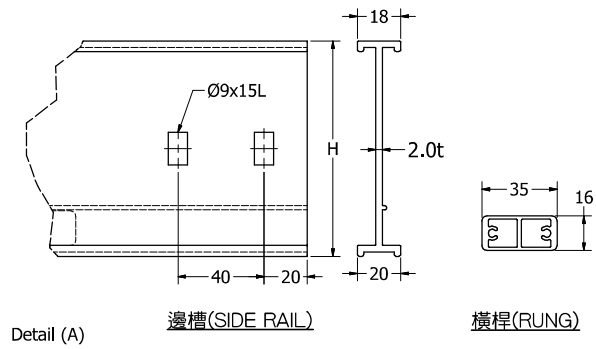
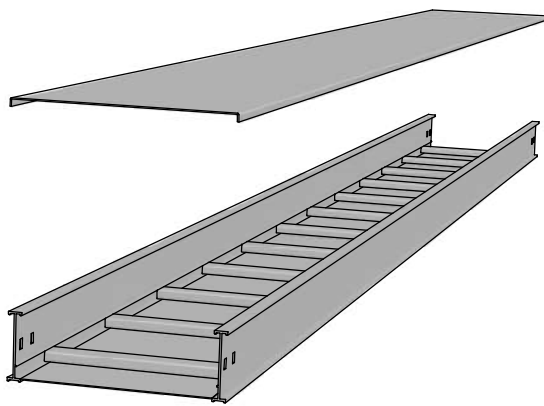
1. CNS 13303 C4466 金屬電纜線架系統
2. NEMA VE1-1996 METALLIC CABLE TRAY SYSTEMS
3. CNS 2608 鋼料之檢驗通則
4. CNS 1361 熱浸法鍍鋅鋼片檢驗法
5. CNS 8500 冷軋不銹鋼鋼片及鋼板檢驗法
6. CNS 2258 鋁擠型條檢驗法
7. CNS 2254 鋁及鋁合金之片及板檢驗法
8. CNS 8406 鋁及鋁合金之陽極氧化膜厚度試驗法
9. CNS 771 烤漆檢驗法

直式線槽 (STRAIGHT CABLE TRAY)

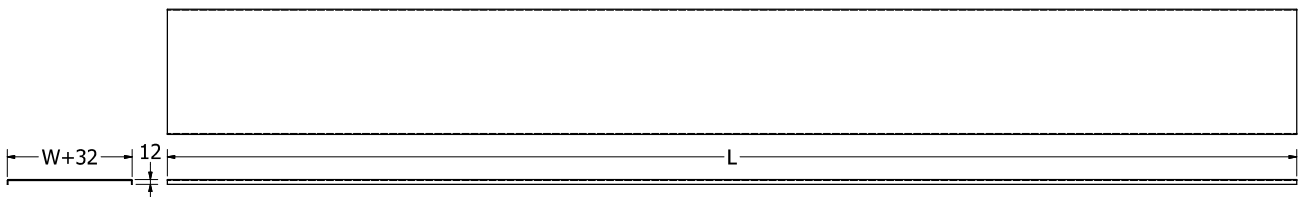
(Units: mm)

寬(W)	高(H)	長(L)
200	100	3000
300		
400		
450		
500		
600		
700		
800		
900		
1000		

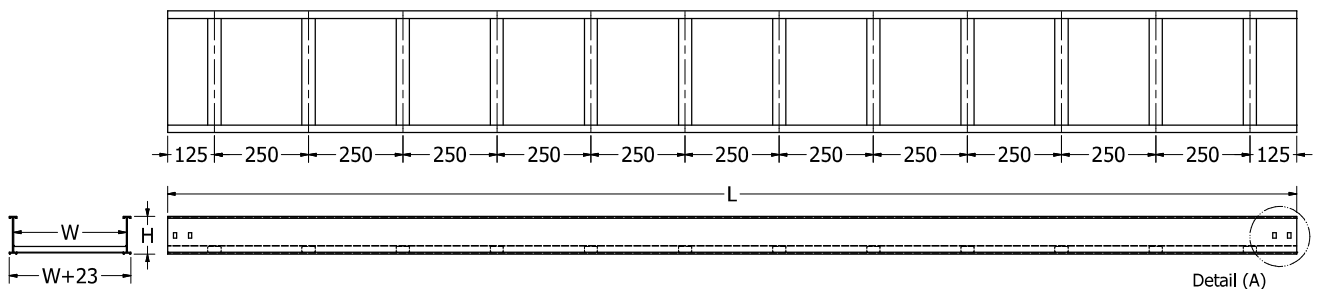
- 邊槽材質：鋁合金 6063-T5 (2.0t)
- 蓋板材質：鋁板 1050 (1.6t)
- 底板材質：鋁板 1050 (1.2t)
- 橫桿間距：250mm
- 表面處理：陽極處理
- 公差範圍：長(L)±3.0mm, 寬(W)±2.0mm, 高(H)±1.0mm, 厚度(t)±0.2mm
- TRAY MATERIAL : ALUMINUM ALLOYS 6063-T5(2.0t)
- COVER MATERIAL : ALUMINUM SHEET 1050(1.6t)
- BOTTOM MATERIAL : ALUMINUM SHEET 1050(1.2t)
- RUNG SPACE : 250mm
- FINISH : ALUMINUM ANODIC TREATMENT
- TOLERANCE : Length±3.0mm, Width±2.0mm, High±1.0mm, Thickness±0.2mm



1 直式線槽蓋板 (STRAIGHT CABLE TRAY COVER)



2 直式線槽 (STRAIGHT CABLE TRAY)



水平 L形 90° 彎頭 (HORIZONTAL 90° ELBOW)

(Units: mm)

寬(W)	高(H)	半徑(R)
200	100	300
300		
400		
450		
500		
600		
700		
800		
900		
1000		

■ 邊槽材質：鋁合金 6063-T5 (2.0t)

■ 蓋板材質：鋁板 1050 (1.6t)

■ 底板材質：鋁板 1050 (1.2t)

■ 橫桿間距：250mm

■ 表面處理：陽極處理

■ 公差範圍：長(L)±3.0mm, 寬(W)±2.0mm, 高(H)±1.0mm, 厚度(t)±0.2mm

■ TRAY MATERIAL : ALUMINUM ALLOYS 6063-T5(2.0t)

■ COVER MATERIAL : ALUMINUM SHEET 1050(1.6t)

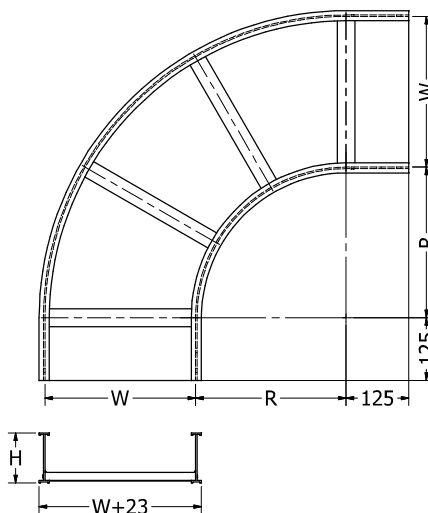
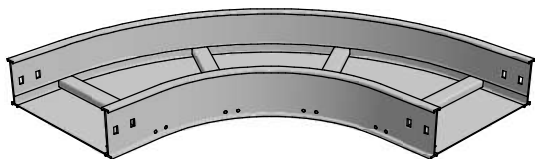
■ BOTTOM MATERIAL : ALUMINUM SHEET 1050(1.2t)

■ RUNG SPACE : 250mm

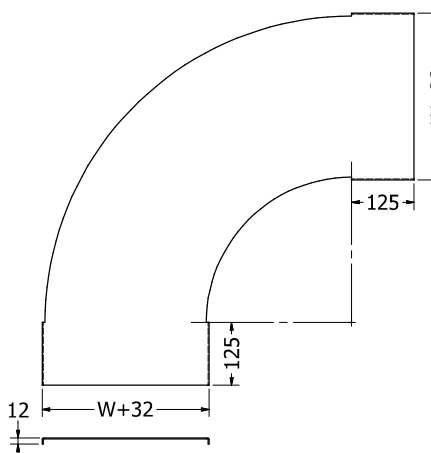
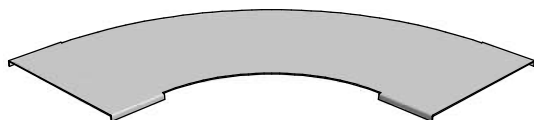
■ FINISH : ALUMINUM ANODIC TREATMENT

■ TOLERANCE : Length±3.0mm, Width±2.0mm, High±1.0mm, Thickness±0.2mm

1 水平 L形 90° 彎頭 (HORIZONTAL 90° ELBOW)



2 水平 L形 90° 彎頭蓋板 (HORIZONTAL 90° ELBOW COVER)



■ 水平L形 60° 形彎頭 (HORIZONTAL 60° ELBOW)

(Units: mm)

寬(W)	高(H)	半徑(R)
200	100	300
300		
400		
450		
500		
600		
700		
800		
900		
1000		

■ 邊槽材質：鋁合金 6063-T5 (2.0t)

■ 蓋板材質：鋁板 1050 (1.6t)

■ 底板材質：鋁板 1050 (1.2t)

■ 橫桿間距：250mm

■ 表面處理：陽極處理

■ 公差範圍：長(L)±3.0mm, 寬(W)±2.0mm, 高(H)±1.0mm, 厚度(t)±0.2mm

■ TRAY MATERIAL : ALUMINUM ALLOYS 6063-T5(2.0t)

■ COVER MATERIAL : ALUMINUM SHEET 1050(1.6t)

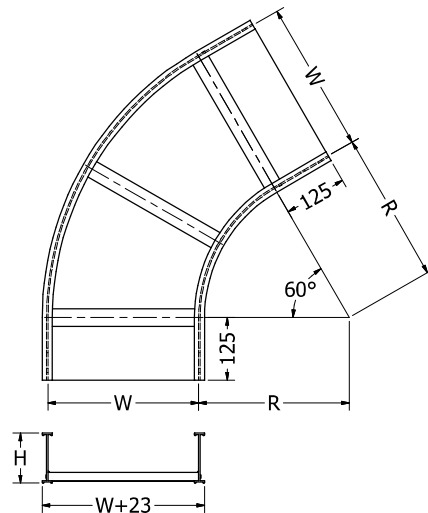
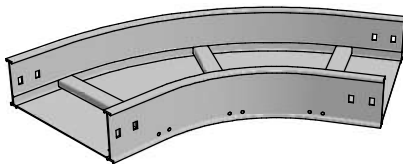
■ BOTTOM MATERIAL : ALUMINUM SHEET 1050(1.2t)

■ RUNG SPACE : 250mm

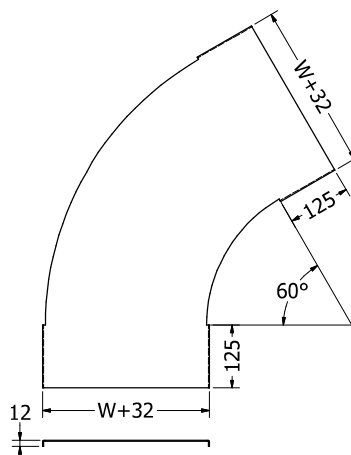
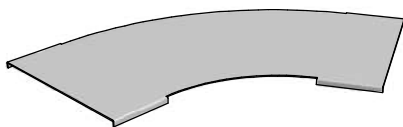
■ FINISH : ALUMINUM ANODIC TREATMENT

■ TOLERANCE : Length±3.0mm, Width±2.0mm, High±1.0mm, Thickness±0.2mm

1 水平L形 60° 彎頭 (HORIZONTAL 60° ELBOW)



2 水平L形 60° 彎頭蓋板 (HORIZONTAL 60° ELBOW COVER)



水平 L形 45° 彎頭 (HORIZONTAL 45° ELBOW)

(Units: mm)

寬(W)	高(H)	半徑(R)
200	100	300
300		
400		
450		
500		
600		
700		
800		
900		
1000		

■ 邊槽材質：鋁合金 6063-T5 (2.0t)

■ 蓋板材質：鋁板 1050 (1.6t)

■ 底板材質：鋁板 1050 (1.2t)

■ 橫桿間距：250mm

■ 表面處理：陽極處理

■ 公差範圍：長(L)±3.0mm, 寬(W)±2.0mm, 高(H)±1.0mm, 厚度(t)±0.2mm

■ TRAY MATERIAL : ALUMINUM ALLOYS 6063-T5(2.0t)

■ COVER MATERIAL : ALUMINUM SHEET 1050(1.6t)

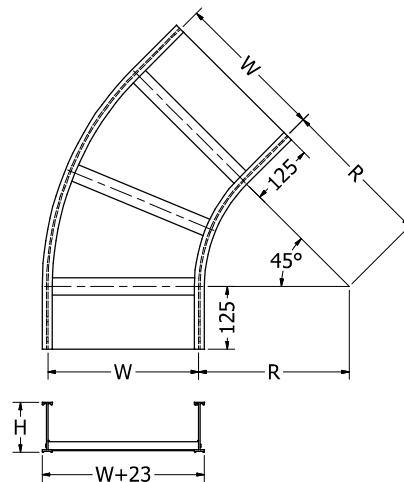
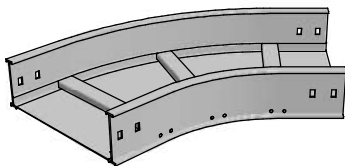
■ BOTTOM MATERIAL : ALUMINUM SHEET 1050(1.2t)

■ RUNG SPACE : 250mm

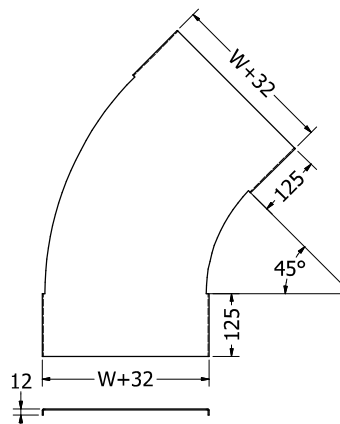
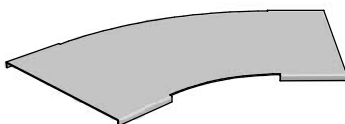
■ FINISH : ALUMINUM ANODIC TREATMENT

■ TOLERANCE : Length±3.0mm, Width±2.0mm, High±1.0mm, Thickness±0.2mm

1 水平 L形 45° 彎頭 (HORIZONTAL 45° ELBOW)



2 水平 L形 45° 彎頭蓋板 (HORIZONTAL 45° ELBOW COVER)



水平 L形 30° 彎頭 (HORIZONTAL 30° ELBOW)

(Units: mm)

寬(W)	高(H)	半徑(R)
200	100	300
300		
400		
450		
500		
600		
700		
800		
900		
1000		

■ 邊槽材質：鋁合金 6063-T5 (2.0t)

■ 蓋板材質：鋁板 1050 (1.6t)

■ 底板材質：鋁板 1050 (1.2t)

■ 橫桿間距：250mm

■ 表面處理：陽極處理

■ 公差範圍：長(L)±3.0mm, 寬(W)±2.0mm, 高(H)±1.0mm, 厚度(t)±0.2mm

■ TRAY MATERIAL : ALUMINUM ALLOYS 6063-T5(2.0t)

■ COVER MATERIAL : ALUMINUM SHEET 1050(1.6t)

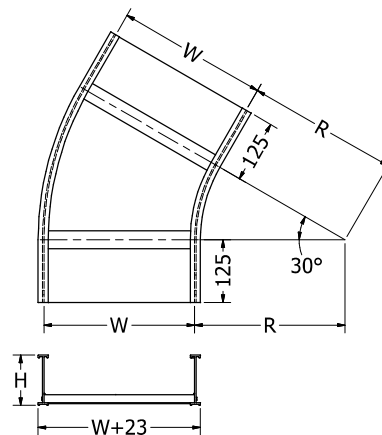
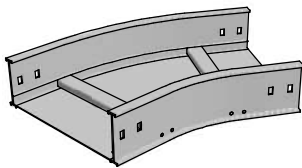
■ BOTTOM MATERIAL : ALUMINUM SHEET 1050(1.2t)

■ RUNG SPACE : 250mm

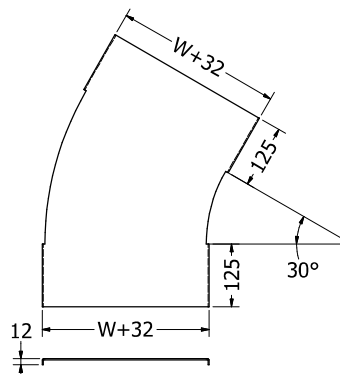
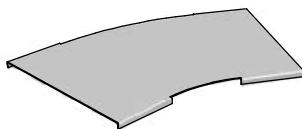
■ FINISH : ALUMINUM ANODIC TREATMENT

■ TOLERANCE : Length±3.0mm, Width±2.0mm, High±1.0mm, Thickness±0.2mm

1 水平 L形 30° 彎頭 (HORIZONTAL 30° ELBOW)



2 水平 L形 30° 彎頭蓋板 (HORIZONTAL 30° ELBOW COVER)



水平 T形彎頭 (HORIZONTAL TEE ELBOW)

(Units: mm)

寬(W)	高(H)	半徑(R)
200	100	300
300		
400		
450		
500		
600		
700		
800		
900		
1000		

■ 邊槽材質：鋁合金 6063-T5 (2.0t)

■ 蓋板材質：鋁板 1050 (1.6t)

■ 底板材質：鋁板 1050 (1.2t)

■ 橫桿間距：250mm

■ 表面處理：陽極處理

■ 公差範圍：長(L)±3.0mm, 寬(W)±2.0mm, 高(H)±1.0mm, 厚度(t)±0.2mm

■ TRAY MATERIAL : ALUMINUM ALLOYS 6063-T5(2.0t)

■ COVER MATERIAL : ALUMINUM SHEET 1050(1.6t)

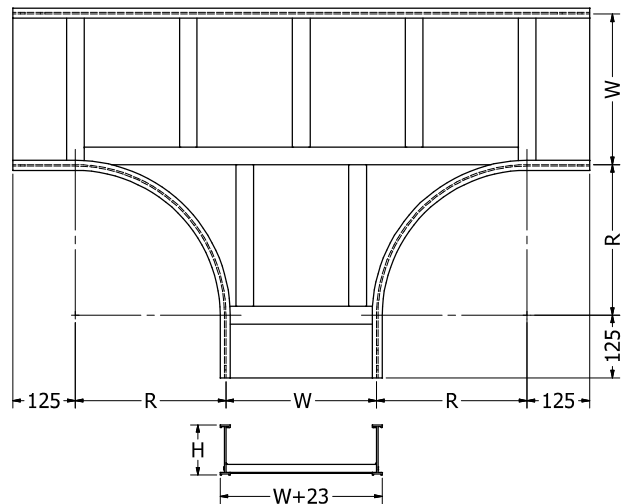
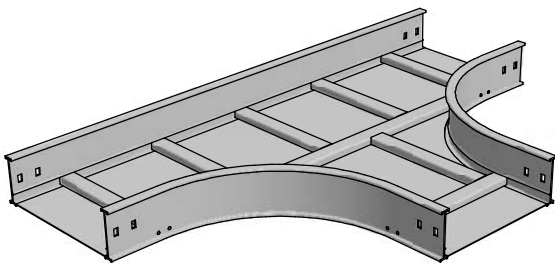
■ BOTTOM MATERIAL : ALUMINUM SHEET 1050(1.2t)

■ RUNG SPACE : 250mm

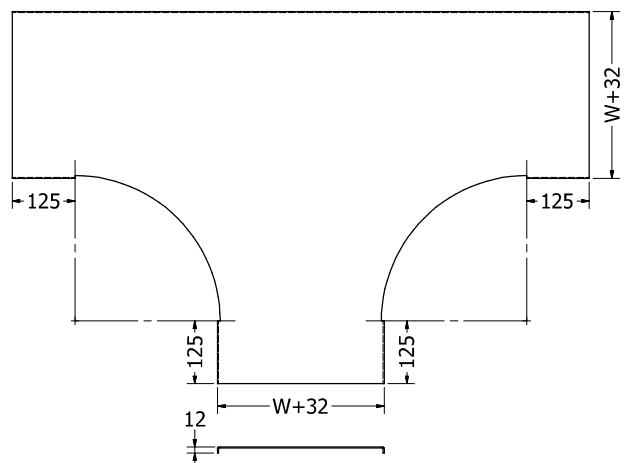
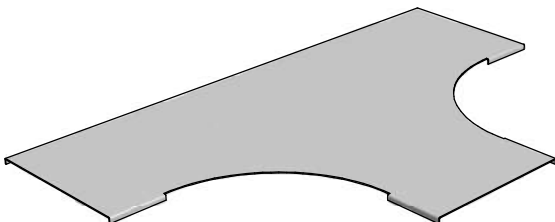
■ FINISH : ALUMINUM ANODIC TREATMENT

■ TOLERANCE : Length±3.0mm, Width±2.0mm, High±1.0mm, Thickness±0.2mm

1 水平 T形彎頭 (HORIZONTAL TEE ELBOW)



2 水平 T形彎頭蓋板 (HORIZONTAL TEE ELBOW COVER)



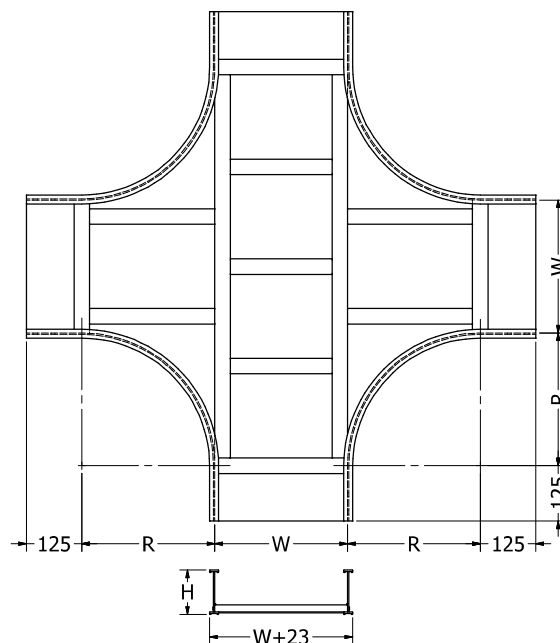
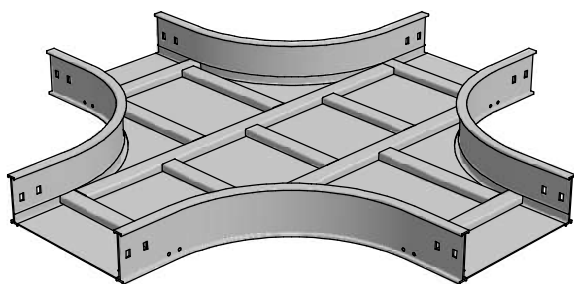
■ 水平 X形彎頭 (HORIZONTAL CROSS ELBOW)

(Units: mm)

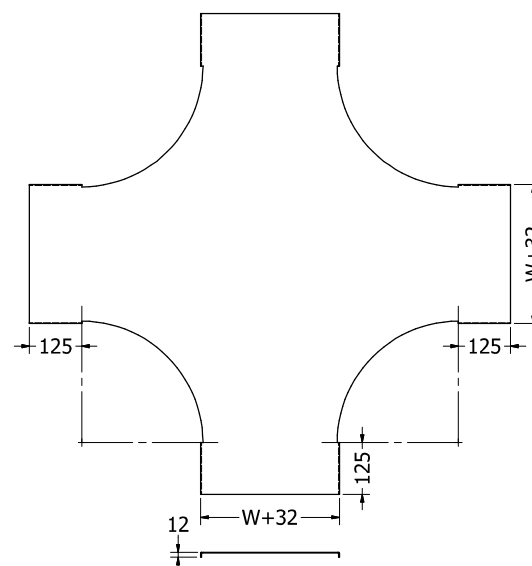
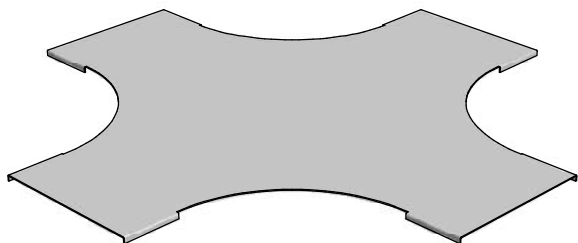
寬(W)	高(H)	半徑(R)
200	100	300
300		
400		
450		
500		
600		
700		
800		
900		
1000		

- 邊槽材質：鋁合金 6063-T5 (2.0t)
- 蓋板材質：鋁板 1050 (1.6t)
- 底板材質：鋁板 1050 (1.2t)
- 橫桿間距：250mm
- 表面處理：陽極處理
- 公差範圍：長(L)±3.0mm, 寬(W)±2.0mm, 高(H)±1.0mm, 厚度(t)±0.2mm
- TRAY MATERIAL : ALUMINUM ALLOYS 6063-T5(2.0t)
- COVER MATERIAL : ALUMINUM SHEET 1050(1.6t)
- BOTTOM MATERIAL : ALUMINUM SHEET 1050(1.2t)
- RUNG SPACE : 250mm
- FINISH : ALUMINUM ANODIC TREATMENT
- TOLERANCE : Length±3.0mm, Width±2.0mm, High±1.0mm, Thickness±0.2mm

1 水平 X形彎頭 (HORIZONTAL CROSS ELBOW)



2 水平 X形彎頭蓋板 (HORIZONTAL CROSS ELBOW COVER)



垂直T形彎頭 (VERTICAL TEE ELBOW)

(Units: mm)

寬(W)	高(H)	半徑(R)
200	100	300
300		
400		
450		
500		
600		
700		
800		
900		
1000		

■ 邊槽材質：鋁合金 6063-T5 (2.0t)

■ 蓋板材質：鋁板 1050 (1.6t)

■ 底板材質：鋁板 1050 (1.2t)

■ 橫桿間距：250mm

■ 表面處理：陽極處理

■ 公差範圍：長(L)±3.0mm, 寬(W)±2.0mm, 高(H)±1.0mm, 厚度(t)±0.2mm

■ TRAY MATERIAL : ALUMINUM ALLOYS 6063-T5(2.0t)

■ COVER MATERIAL : ALUMINUM SHEET 1050(1.6t)

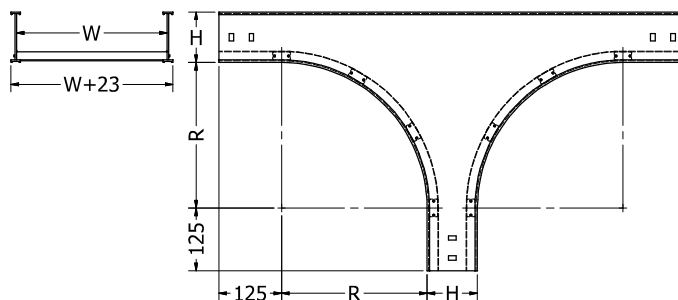
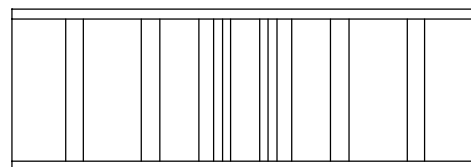
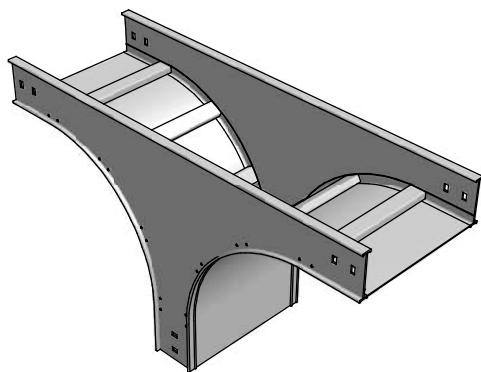
■ BOTTOM MATERIAL : ALUMINUM SHEET 1050(1.2t)

■ RUNG SPACE : 250mm

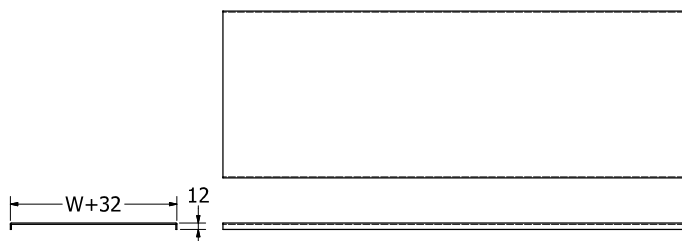
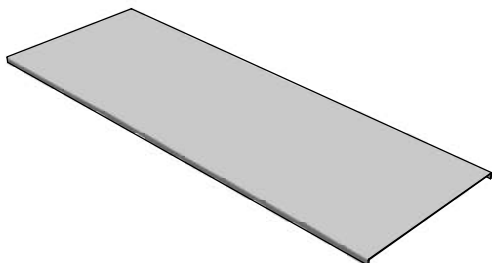
■ FINISH : ALUMINUM ANODIC TREATMENT

■ TOLERANCE : Length±3.0mm, Width±2.0mm, High±1.0mm, Thickness±0.2mm

1 垂直T形彎頭 (VERTICAL TEE ELBOW)



2 垂直T形彎頭蓋板 (VERTICAL TEE ELBOW COVER)



垂直上升 90° 彎頭 (VERTICAL INSIDE 90° ELBOW)

(Units: mm)

寬(W)	高(H)	半徑(R)
200	100	300
300		
400		
450		
500		
600		
700		
800		
900		
1000		

■ 邊槽材質：鋁合金 6063-T5 (2.0t)

■ 蓋板材質：鋁板 1050 (1.6t)

■ 底板材質：鋁板 1050 (1.2t)

■ 橫桿間距：250mm

■ 表面處理：陽極處理

■ 公差範圍：長(L)±3.0mm, 寬(W)±2.0mm, 高(H)±1.0mm, 厚度(t)±0.2mm

■ TRAY MATERIAL : ALUMINUM ALLOYS 6063-T5(2.0t)

■ COVER MATERIAL : ALUMINUM SHEET 1050(1.6t)

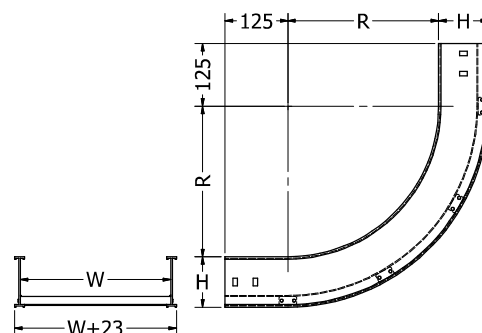
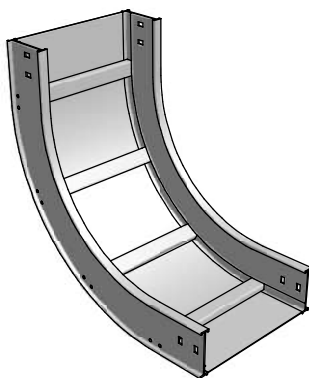
■ BOTTOM MATERIAL : ALUMINUM SHEET 1050(1.2t)

■ RUNG SPACE : 250mm

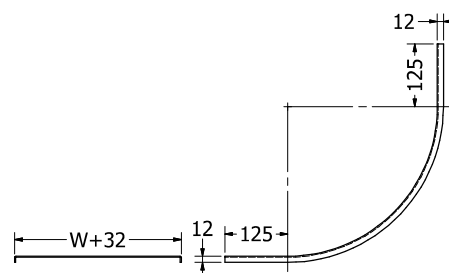
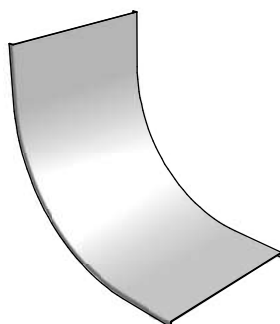
■ FINISH : ALUMINUM ANODIC TREATMENT

■ TOLERANCE : Length±3.0mm, Width±2.0mm, High±1.0mm, Thickness±0.2mm

1 垂直上升 90° 彎頭 (VERTICAL INSIDE 90° ELBOW)



2 垂直上升 90° 彎頭蓋板 (VERTICAL INSIDE 90° ELBOW COVER)



垂直上升 60° 彎頭 (VERTICAL INSIDE 60° ELBOW)

(Units: mm)

寬(W)	高(H)	半徑(R)
200	100	300
300		
400		
450		
500		
600		
700		
800		
900		
1000		

■ 邊槽材質：鋁合金 6063-T5 (2.0t)

■ 蓋板材質：鋁板 1050 (1.6t)

■ 底板材質：鋁板 1050 (1.2t)

■ 橫桿間距：250mm

■ 表面處理：陽極處理

■ 公差範圍：長(L)±3.0mm, 寬(W)±2.0mm, 高(H)±1.0mm, 厚度(t)±0.2mm

■ TRAY MATERIAL : ALUMINUM ALLOYS 6063-T5(2.0t)

■ COVER MATERIAL : ALUMINUM SHEET 1050(1.6t)

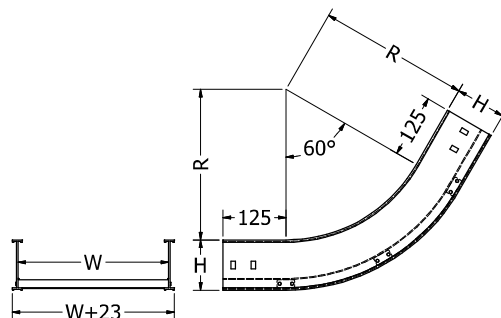
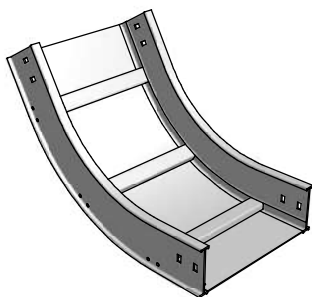
■ BOTTOM MATERIAL : ALUMINUM SHEET 1050(1.2t)

■ RUNG SPACE : 250mm

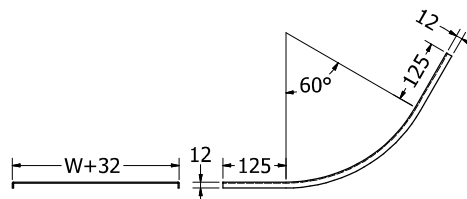
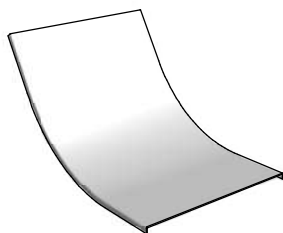
■ FINISH : ALUMINUM ANODIC TREATMENT

■ TOLERANCE : Length±3.0mm, Width±2.0mm, High±1.0mm, Thickness±0.2mm

1 垂直上升 60° 彎頭 (VERTICAL INSIDE 60° ELBOW)



2 垂直上升 60° 彎頭蓋板 (VERTICAL INSIDE 60° ELBOW COVER)



垂直上升 45° 彎頭 (VERTICAL INSIDE 45° ELBOW)

(Units: mm)

寬(W)	高(H)	半徑(R)
200	100	300
300		
400		
450		
500		
600		
700		
800		
900		
1000		

■ 邊槽材質：鋁合金 6063-T5 (2.0t)

■ 蓋板材質：鋁板 1050 (1.6t)

■ 底板材質：鋁板 1050 (1.2t)

■ 橫桿間距：250mm

■ 表面處理：陽極處理

■ 公差範圍：長(L)±3.0mm, 寬(W)±2.0mm, 高(H)±1.0mm, 厚度(t)±0.2mm

■ TRAY MATERIAL : ALUMINUM ALLOYS 6063-T5(2.0t)

■ COVER MATERIAL : ALUMINUM SHEET 1050(1.6t)

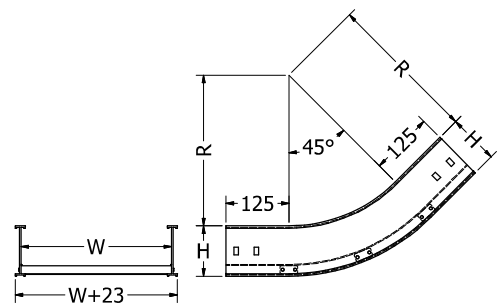
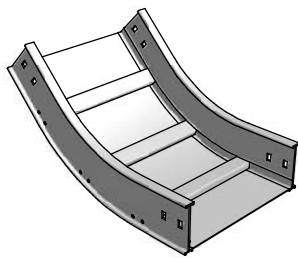
■ BOTTOM MATERIAL : ALUMINUM SHEET 1050(1.2t)

■ RUNG SPACE : 250mm

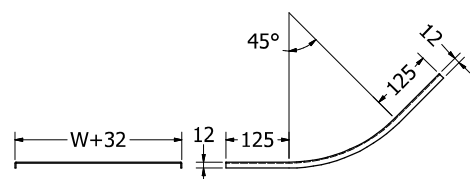
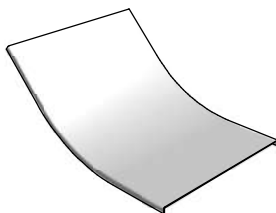
■ FINISH : ALUMINUM ANODIC TREATMENT

■ TOLERANCE : Length±3.0mm, Width±2.0mm, High±1.0mm, Thickness±0.2mm

1 垂直上升 45° 彎頭 (VERTICAL INSIDE 45° ELBOW)



2 垂直上升 45° 彎頭蓋板 (VERTICAL INSIDE 45° ELBOW COVER)



垂直上升 30° 彎頭 (VERTICAL INSIDE 30° ELBOW)

(Units: mm)

寬(W)	高(H)	半徑(R)
200	100	300
300		
400		
450		
500		
600		
700		
800		
900		
1000		

■ 邊槽材質：鋁合金 6063-T5 (2.0t)

■ 蓋板材質：鋁板 1050 (1.6t)

■ 底板材質：鋁板 1050 (1.2t)

■ 橫桿間距：250mm

■ 表面處理：陽極處理

■ 公差範圍：長(L)±3.0mm, 寬(W)±2.0mm, 高(H)±1.0mm, 厚度(t)±0.2mm

■ TRAY MATERIAL : ALUMINUM ALLOYS 6063-T5(2.0t)

■ COVER MATERIAL : ALUMINUM SHEET 1050(1.6t)

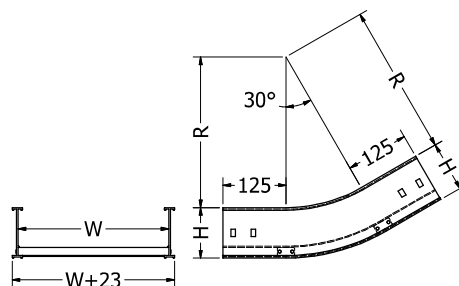
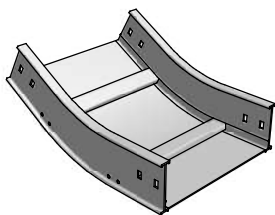
■ BOTTOM MATERIAL : ALUMINUM SHEET 1050(1.2t)

■ RUNG SPACE : 250mm

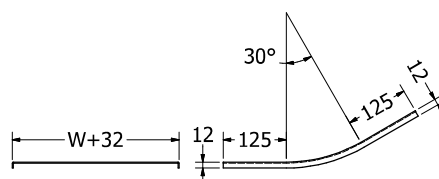
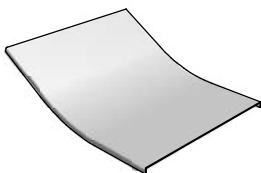
■ FINISH : ALUMINUM ANODIC TREATMENT

■ TOLERANCE : Length±3.0mm, Width±2.0mm, High±1.0mm, Thickness±0.2mm

1 垂直上升 30° 彎頭 (VERTICAL INSIDE 30° ELBOW)



2 垂直上升 30° 彎頭蓋板 (VERTICAL INSIDE 30° ELBOW COVER)



垂直下降 90° 彎頭 (VERTICAL OUTSIDE 90° ELBOW)

(Units: mm)

寬(W)	高(H)	半徑(R)
200	100	300
300		
400		
450		
500		
600		
700		
800		
900		
1000		

■ 邊槽材質：鋁合金 6063-T5 (2.0t)

■ 蓋板材質：鋁板 1050 (1.6t)

■ 底板材質：鋁板 1050 (1.2t)

■ 橫桿間距：250mm

■ 表面處理：陽極處理

■ 公差範圍：長(L)±3.0mm, 寬(W)±2.0mm, 高(H)±1.0mm, 厚度(t)±0.2mm

■ TRAY MATERIAL : ALUMINUM ALLOYS 6063-T5(2.0t)

■ COVER MATERIAL : ALUMINUM SHEET 1050(1.6t)

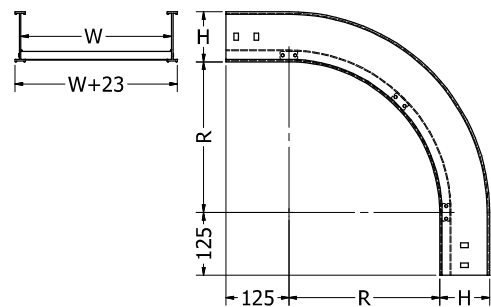
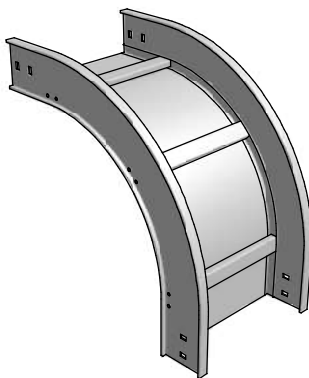
■ BOTTOM MATERIAL : ALUMINUM SHEET 1050(1.2t)

■ RUNG SPACE : 250mm

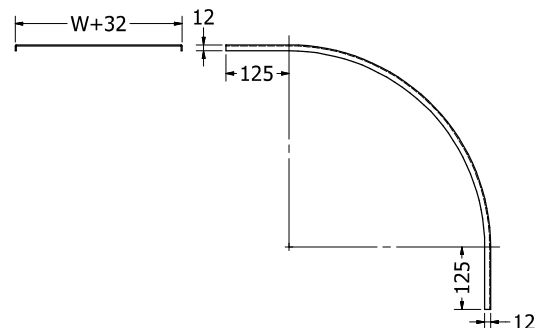
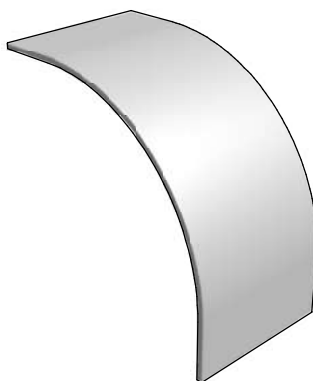
■ FINISH : ALUMINUM ANODIC TREATMENT

■ TOLERANCE : Length±3.0mm, Width±2.0mm, High±1.0mm, Thickness±0.2mm

1 垂直下降 90° 彎頭 (VERTICAL OUTSIDE 90° ELBOW)



2 垂直下降 90° 彎頭蓋板 (VERTICAL OUTSIDE 90° ELBOW COVER)



垂直下降 60° 彎頭 (VERTICAL OUTSIDE 60° ELBOW)

(Units: mm)

寬(W)	高(H)	半徑(R)
200	100	300
300		
400		
450		
500		
600		
700		
800		
900		
1000		

■ 邊槽材質：鋁合金 6063-T5 (2.0t)

■ 蓋板材質：鋁板 1050 (1.6t)

■ 底板材質：鋁板 1050 (1.2t)

■ 橫桿間距：250mm

■ 表面處理：陽極處理

■ 公差範圍：長(L)±3.0mm, 寬(W)±2.0mm, 高(H)±1.0mm, 厚度(t)±0.2mm

■ TRAY MATERIAL : ALUMINUM ALLOYS 6063-T5(2.0t)

■ COVER MATERIAL : ALUMINUM SHEET 1050(1.6t)

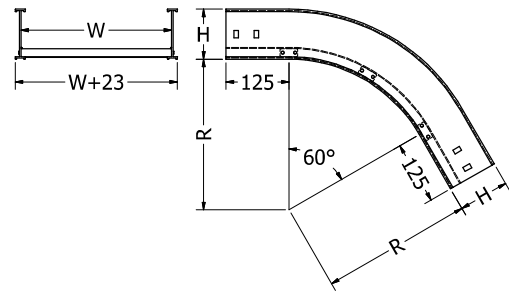
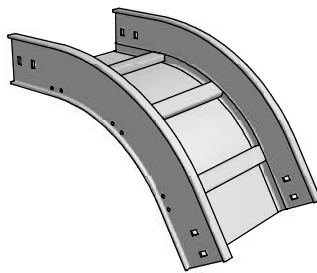
■ BOTTOM MATERIAL : ALUMINUM SHEET 1050(1.2t)

■ RUNG SPACE : 250mm

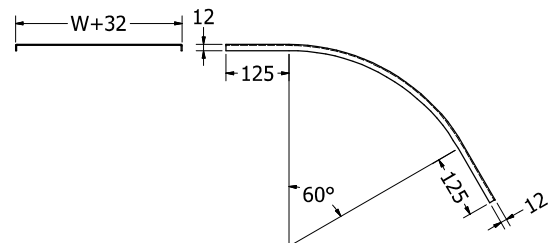
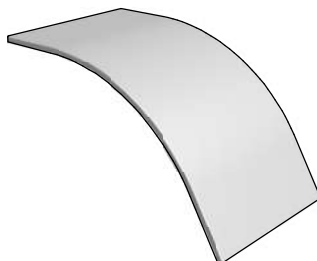
■ FINISH : ALUMINUM ANODIC TREATMENT

■ TOLERANCE : Length±3.0mm, Width±2.0mm, High±1.0mm, Thickness±0.2mm

1 垂直下降 60° 彎頭 (VERTICAL OUTSIDE 60° ELBOW)



2 垂直下降 60° 彎頭蓋板 (VERTICAL OUTSIDE 60° ELBOW COVER)



垂直下降 45° 彎頭 (VERTICAL OUTSIDE 45° ELBOW)

(Units: mm)

寬(W)	高(H)	半徑(R)
200	100	300
300		
400		
450		
500		
600		
700		
800		
900		
1000		

■ 邊槽材質：鋁合金 6063-T5 (2.0t)

■ 蓋板材質：鋁板 1050 (1.6t)

■ 底板材質：鋁板 1050 (1.2t)

■ 橫桿間距：250mm

■ 表面處理：陽極處理

■ 公差範圍：長(L)±3.0mm, 寬(W)±2.0mm, 高(H)±1.0mm, 厚度(t)±0.2mm

■ TRAY MATERIAL : ALUMINUM ALLOYS 6063-T5(2.0t)

■ COVER MATERIAL : ALUMINUM SHEET 1050(1.6t)

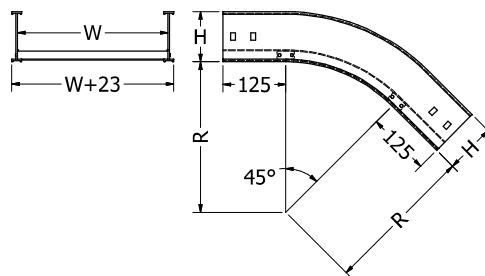
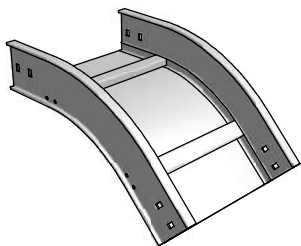
■ BOTTOM MATERIAL : ALUMINUM SHEET 1050(1.2t)

■ RUNG SPACE : 250mm

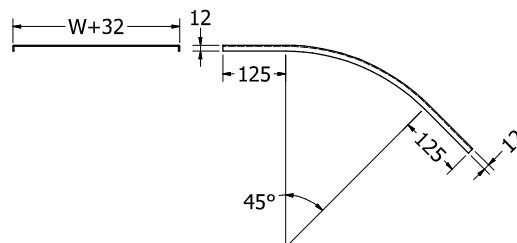
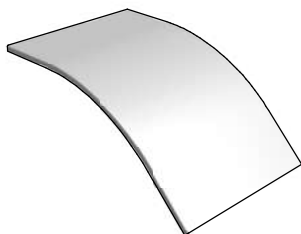
■ FINISH : ALUMINUM ANODIC TREATMENT

■ TOLERANCE : Length±3.0mm, Width±2.0mm, High±1.0mm, Thickness±0.2mm

1 垂直下降 45° 彎頭 (VERTICAL OUTSIDE 45° ELBOW)



2 垂直下降 45° 彎頭蓋板 (VERTICAL OUTSIDE 45° ELBOW COVER)



垂直下降 30° 彎頭 (VERTICAL OUTSIDE 30° ELBOW)

(Units: mm)

寬(W)	高(H)	半徑(R)
200	100	300
300		
400		
450		
500		
600		
700		
800		
900		
1000		

■ 邊槽材質：鋁合金 6063-T5 (2.0t)

■ 蓋板材質：鋁板 1050 (1.6t)

■ 底板材質：鋁板 1050 (1.2t)

■ 橫桿間距：250mm

■ 表面處理：陽極處理

■ 公差範圍：長(L)±3.0mm, 寬(W)±2.0mm, 高(H)±1.0mm, 厚度(t)±0.2mm

■ TRAY MATERIAL : ALUMINUM ALLOYS 6063-T5(2.0t)

■ COVER MATERIAL : ALUMINUM SHEET 1050(1.6t)

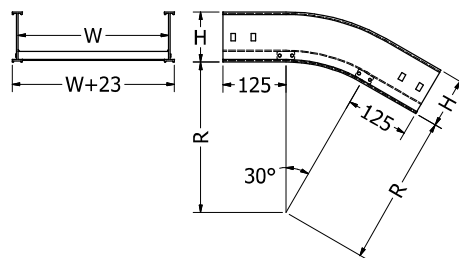
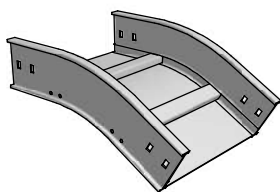
■ BOTTOM MATERIAL : ALUMINUM SHEET 1050(1.2t)

■ RUNG SPACE : 250mm

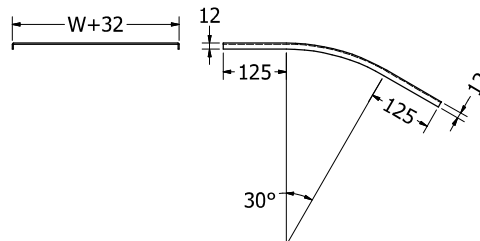
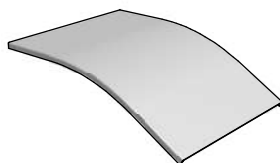
■ FINISH : ALUMINUM ANODIC TREATMENT

■ TOLERANCE : Length±3.0mm, Width±2.0mm, High±1.0mm, Thickness±0.2mm

1 垂直下降 30° 彎頭 (VERTICAL OUTSIDE 30° ELBOW)

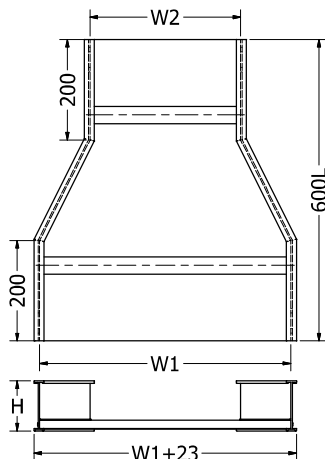
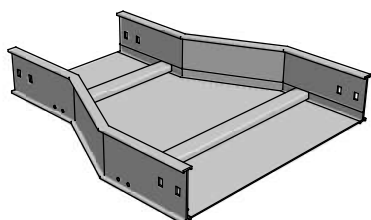


2 垂直下降 30° 彎頭蓋板 (VERTICAL OUTSIDE 30° ELBOW COVER)

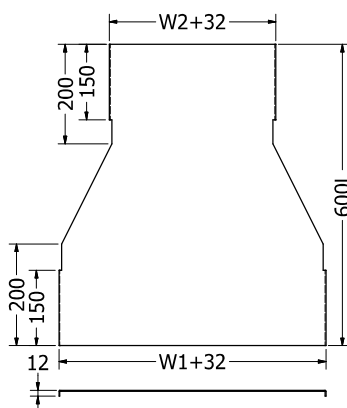
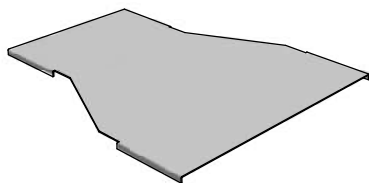


■ 中間異徑接頭 (CENTER REDUCER ELBOW)

1 中間異徑接頭 (CENTER REDUCER ELBOW)



2 中間異徑接頭蓋板 (CENTER REDUCER ELBOW COVER)



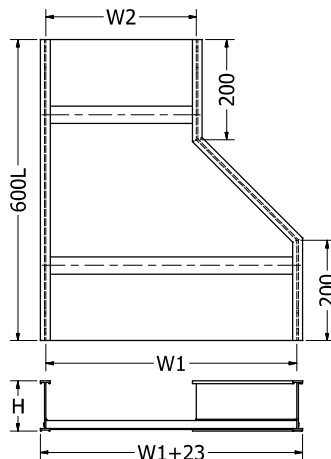
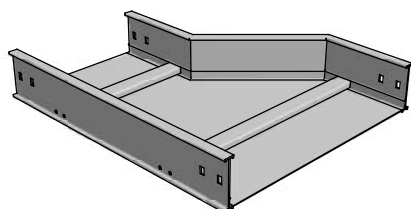
- 邊槽材質：鋁合金 6063-T5 (2.0t)
- 蓋板材質：鋁板 1050 (1.6t)
- 底板材質：鋁板 1050 (1.2t)
- 橫桿間距：250mm
- 表面處理：陽極處理
- 公差範圍：長(L)±3.0mm, 寬(W)±2.0mm, 高(H)±1.0mm, 厚度(t)±0.2mm

- TRAY MATERIAL : ALUMINUM ALLOYS 6063-T5(2.0t)
- COVER MATERIAL : ALUMINUM SHEET 1050(1.6t)
- BOTTOM MATERIAL : ALUMINUM SHEET 1050(1.2t)
- RUNG SPACE : 250mm
- FINISH : ALUMINUM ANODIC TREATMENT
- TOLERANCE : Length±3.0mm, Width±2.0mm, High±1.0mm, Thickness±0.2mm

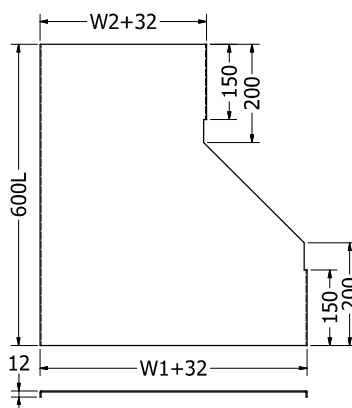
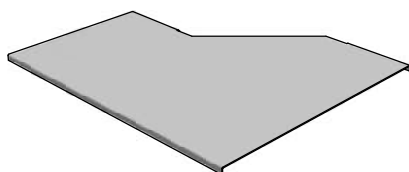
(Units:mm)		
寬(W1)	寬(W2)	高(H)
200	100	100
300	100	
	200	
400	100	
	200	
	300	
500	100	
	200	
	300	
	400	
600	100	
	200	
	300	
	450	
	500	
700	100	
	200	
	300	
	400	
	500	
	600	
800	100	
	200	
	300	
	400	
	500	
	600	
	700	
900	100	
	200	
	300	
	400	
	500	
	600	
	700	
	800	
1000	100	
	200	
	300	
	400	
	500	
	600	
	700	
	800	
	900	

左偏異徑接頭 (LEFT REDUCER ELBOW)

1 左偏異徑接頭 (LEFT REDUCER ELBOW)



2 左偏異徑接頭蓋板 (LEFT REDUCER ELBOW COVER)



- 邊槽材質：鋁合金 6063-T5 (2.0t)
- 蓋板材質：鋁板 1050 (1.6t)
- 底板材質：鋁板 1050 (1.2t)
- 橫桿間距：250mm
- 表面處理：陽極處理
- 公差範圍：長(L)±3.0mm, 寬(W)±2.0mm, 高(H)±1.0mm, 厚度(t)±0.2mm

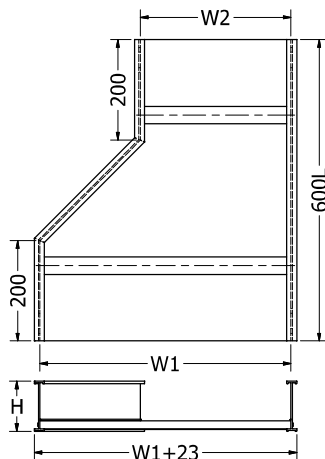
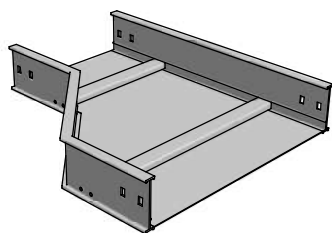
- TRAY MATERIAL : ALUMINUM ALLOYS 6063-T5(2.0t)
- COVER MATERIAL : ALUMINUM SHEET 1050(1.6t)
- BOTTOM MATERIAL : ALUMINUM SHEET 1050(1.2t)
- RUNG SPACE : 250mm
- FINISH : ALUMINUM ANODIC TREATMENT
- TOLERANCE : Length±3.0mm, Width±2.0mm, High±1.0mm, Thickness±0.2mm

(Units:mm)

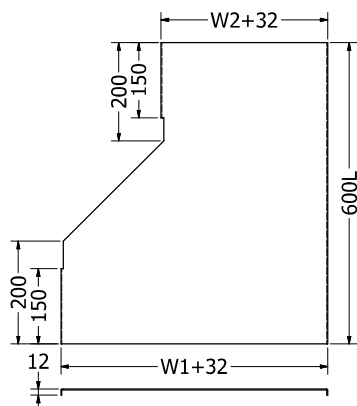
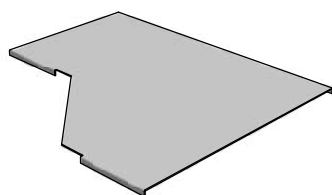
寬(W1)	寬(W2)	高(H)
200	100	100
300	100	
	200	
400	100	
	200	
	300	
500	100	
	200	
	300	
	400	
600	100	
	200	
	300	
	450	
	500	
700	100	
	200	
	300	
	400	
	500	
	600	
	100	
800	200	
	300	
	400	
	500	
	600	
	700	
	100	
900	200	
	300	
	400	
	500	
	600	
	700	
	800	
1000	100	
	200	
	300	
	400	
	500	
	600	
	700	
800		
900		

右偏異徑接頭 (RIGHT REDUCER ELBOW)

1 右偏異徑接頭 (RIGHT REDUCER ELBOW)



2 右偏異徑接頭蓋板 (RIGHT REDUCER ELBOW COVER)



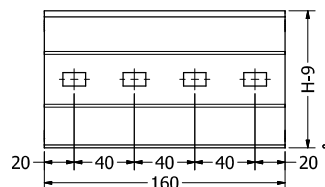
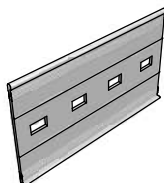
- 邊槽材質：鋁合金 6063-T5 (2.0t)
- 蓋板材質：鋁板 1050 (1.6t)
- 底板材質：鋁板 1050 (1.2t)
- 橫桿間距：250mm
- 表面處理：陽極處理
- 公差範圍：長(L)±3.0mm, 寬(W)±2.0mm, 高(H)±1.0mm, 厚度(t)±0.2mm

- TRAY MATERIAL : ALUMINUM ALLOYS 6063-T5(2.0t)
- COVER MATERIAL : ALUMINUM SHEET 1050(1.6t)
- BOTTOM MATERIAL : ALUMINUM SHEET 1050(1.2t)
- RUNG SPACE : 250mm
- FINISH : ALUMINUM ANODIC TREATMENT
- TOLERANCE : Length±3.0mm, Width±2.0mm, High±1.0mm, Thickness±0.2mm

(Units:mm)		
寬(W1)	寬(W2)	高(H)
200	100	100
300	100	
	200	
400	100	
	200	
	300	
500	100	
	200	
	300	
	400	
600	100	
	200	
	300	
	450	
	500	
700	100	
	200	
	300	
	400	
	500	
	600	
	700	
800	100	
	200	
	300	
	400	
	500	
	600	
	700	
900	100	
	200	
	300	
	400	
	500	
	600	
	700	
1000	100	
	200	
	300	
	400	
	500	
	600	
	700	
800		
900		

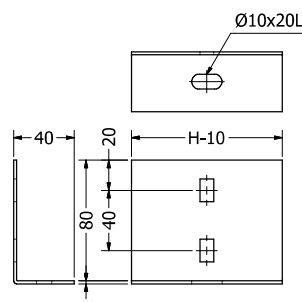
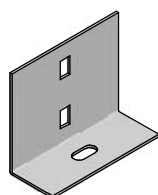
- 線槽連接片 (STRAIGHT TRAY CONNECTOR)
- 配電盤連接片 (PANEL PLATE CONNECTOR)
- 水平可調連接片 (ADJUSTABLE HORIZONTAL CONNECTOR)

1 線槽連接片 (STRAIGHT TRAY CONNECTOR)



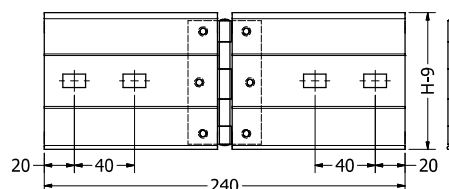
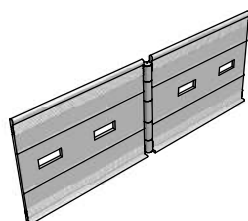
- | | |
|-------------------|------------------------------------|
| ■ 材 質：鋁合金 6063-T5 | ■ MATERIAL：ALUMINUM ALLOYS 6063-T5 |
| ■ 厚 度：2.5mm±0.2mm | ■ THICKNESS：2.5mm±0.2mm |
| ■ 表面處理：陽極處理 | ■ FINISH：ALUMINUM ANODIC TREATMENT |

2 配電盤連接片 (PANEL PLATE CONNECTOR)



- | | |
|-------------------|------------------------------------|
| ■ 材 質：鋁板 1050 | ■ MATERIAL：ALUMINUM SHEET 1050 |
| ■ 厚 度：2.0mm±0.2mm | ■ THICKNESS：2.0mm±0.2mm |
| ■ 表面處理：陽極處理 | ■ FINISH：ALUMINUM ANODIC TREATMENT |

3 水平可調連接片 (ADJUSTABLE HORIZONTAL CONNECTOR)



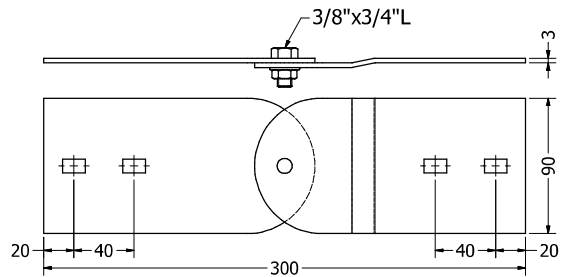
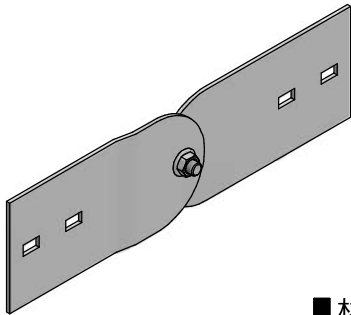
- | | |
|-------------------|------------------------------------|
| ■ 材 質：鋁合金 6063-T5 | ■ MATERIAL：ALUMINUM ALLOYS 6063-T5 |
| ■ 厚 度：2.5mm±0.2mm | ■ THICKNESS：2.5mm±0.2mm |
| ■ 表面處理：陽極處理 | ■ FINISH：ALUMINUM ANODIC TREATMENT |

■ 垂直可調連接片 (ADJUSTABLE VERTICAL CONNECTOR)

■ 異徑連接片 (REDUCER PLATES)

■ 終端封板 (BLIND END COVER)

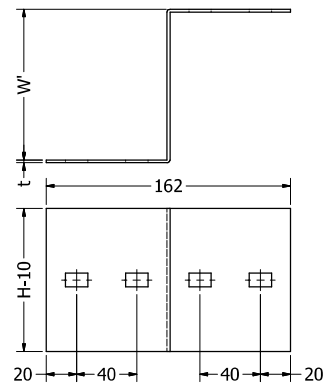
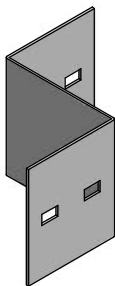
1 垂直可調連接片 (ADJUSTABLE VERTICAL CONNECTOR)



■ 材 質：鋁合金 6063-T5
 ■ 厚 度：3.0mm±0.2mm
 ■ 表面處理：陽極處理

■ MATERIAL : ALUMINUM ALLOYS 6063-T5
 ■ THICKNESS : 3.0mm±0.2mm
 ■ FINISH : ALUMINUM ANODIC TREATMENT

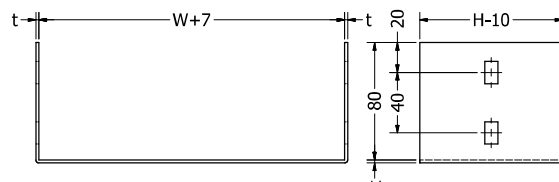
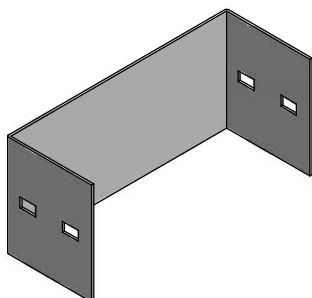
2 異徑連接片 (REDUCER PLATES)



■ 材 質：鋁板 1050
 ■ 厚 度：2.0mm±0.2mm
 ■ 表面處理：陽極處理

■ MATERIAL : ALUMINUM SHEET 1050
 ■ THICKNESS : 2.0mm±0.2mm
 ■ FINISH : ALUMINUM ANODIC TREATMENT

3 終端封板 (BLIND END COVER)



■ 材 質：鋁板 1050
 ■ 厚 度：2.0mm±0.2mm
 ■ 表面處理：陽極處理

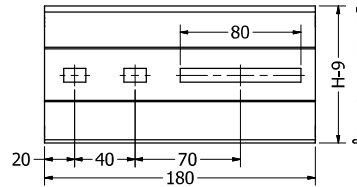
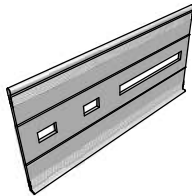
■ MATERIAL : ALUMINUM SHEET 1050
 ■ THICKNESS : 2.0mm±0.2mm
 ■ FINISH : ALUMINUM ANODIC TREATMENT

伸縮可調連接片 (ADJUSTABLE CONNECTOR)

垂直側板 (SIDE BRANCH PLATE)

垂直分支板 (VERTICAL BRANCH PLATE)

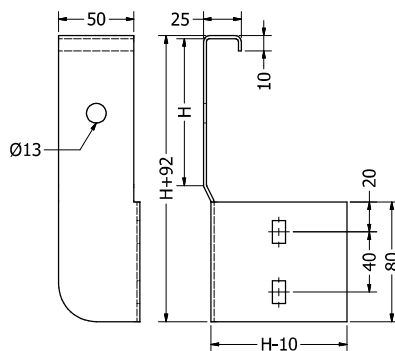
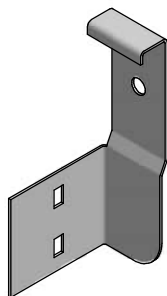
1 伸縮可調連接片 (ADJUSTABLE CONNECTOR)



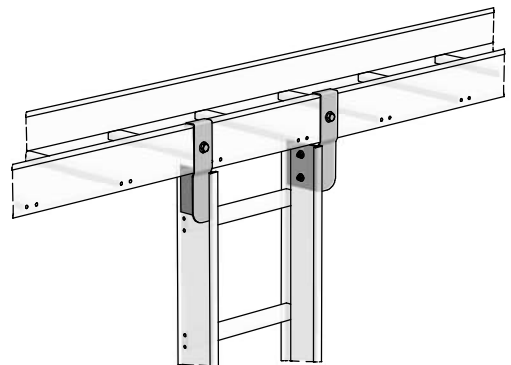
- 材 質：鋁合金 6063-T5
- 厚 度：2.5mm±0.2mm
- 表面處理：陽極處理

- MATERIAL : ALUMINUM ALLOYS 6063-T5
- THICKNESS : 2.5mm±0.2mm
- FINISH : ALUMINUM ANODIC TREATMENT

2 垂直側板 (SIDE BRANCH PLATE)



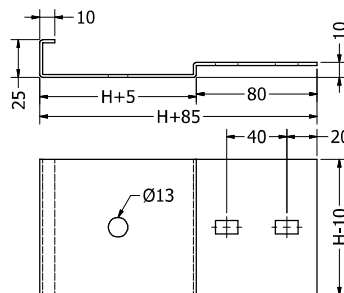
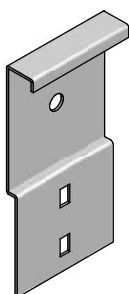
垂直側板安裝示意圖



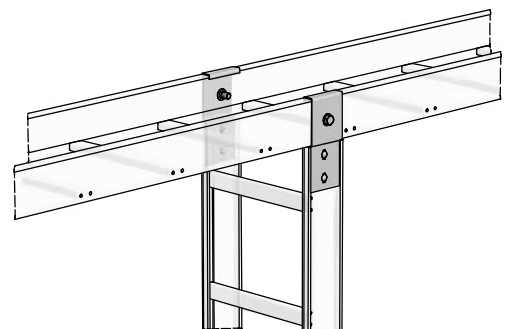
- 材 質：鋁板 1050
- 厚 度：2.0mm±0.2mm
- 表面處理：陽極處理

- MATERIAL : ALUMINUM SHEET 1050
- THICKNESS : 2.0mm±0.2mm
- FINISH : ALUMINUM ANODIC TREATMENT

3 垂直分支板 (VERTICAL BRANCH PLATE)



垂直分支板安裝示意圖

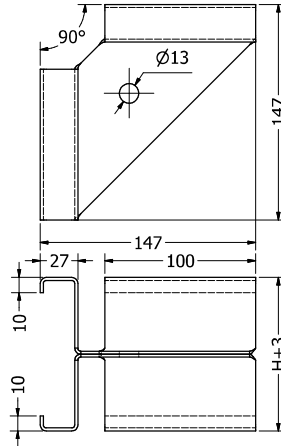
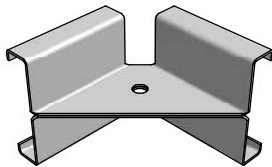


- 材 質：鋁板 1050
- 厚 度：2.0mm±0.2mm
- 表面處理：陽極處理

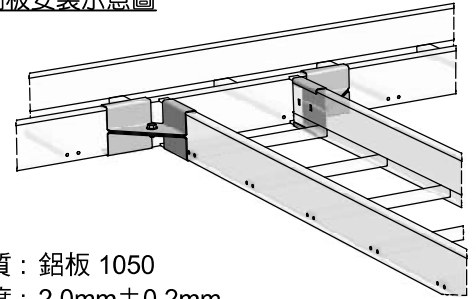
- MATERIAL : ALUMINUM SHEET 1050
- THICKNESS : 2.0mm±0.2mm
- FINISH : ALUMINUM ANODIC TREATMENT

- 水平側板 (TEE BRANCH PLATE)
- 分隔板 (SEPARATER PLATE)
- 分隔板固定片 (SEPARATER CLAMP)

1 水平側板 (TEE BRANCH PLATE)

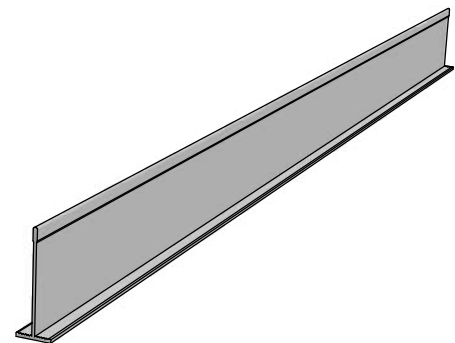
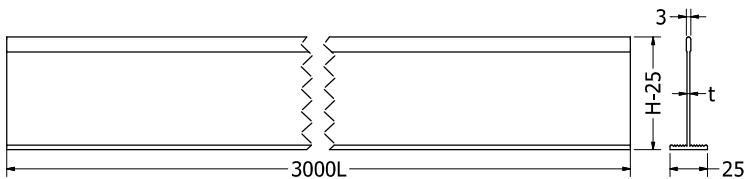


水平側板安裝示意圖



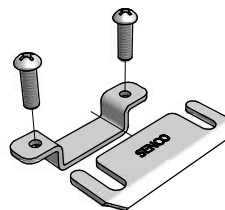
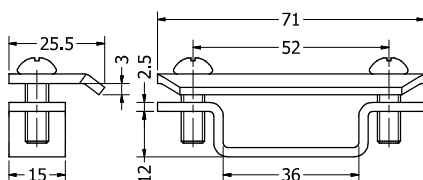
- 材 質：鋁板 1050
- 厚 度：2.0mm±0.2mm
- 表面處理：陽極處理
- MATERIAL：ALUMINUM SHEET 1050
- THICKNESS：2.0mm±0.2mm
- FINISH：ALUMINUM ANODIC TREATMENT

2 分隔板 (SEPARATER PLATE)

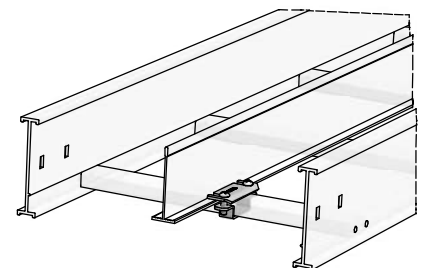


- 材 質：鋁合金 6063-T5
- 厚 度：2.0mm±0.2mm
- 表面處理：陽極處理
- MATERIAL：ALUMINUM ALLOYS 6063-T5
- THICKNESS：2.0mm±0.2mm
- FINISH：ALUMINUM ANODIC TREATMENT

3 分隔板固定片 (SEPARATER CLAMP)



分隔板安裝示意圖

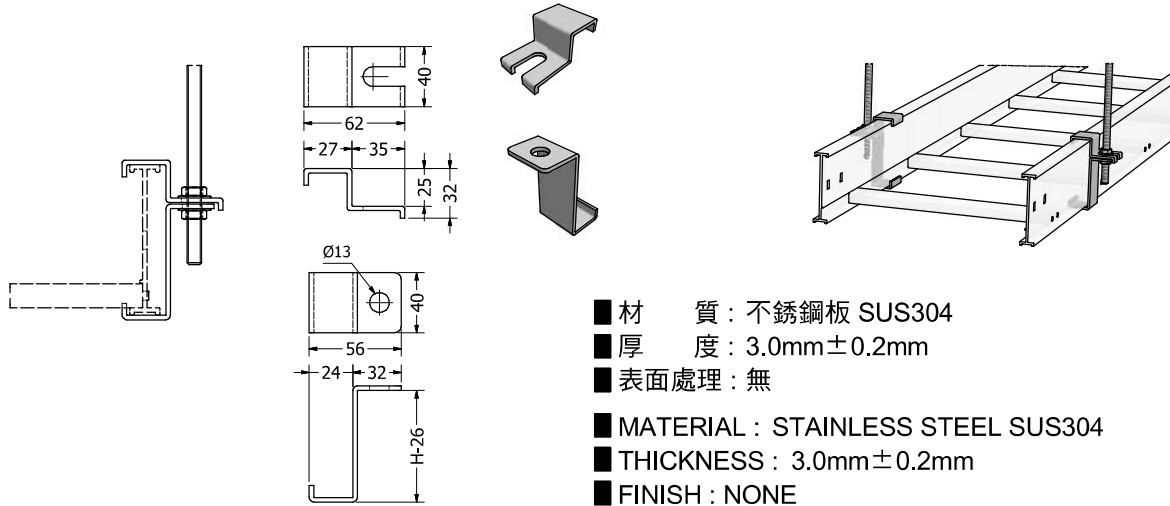


- 材 質：不銹鋼板 SUS304
- 厚 度：2.5mm±0.2mm
- 表面處理：無
- MATERIAL：STAINLESS STEEL SUS304
- THICKNESS：2.5mm±0.2mm
- FINISH：NONE

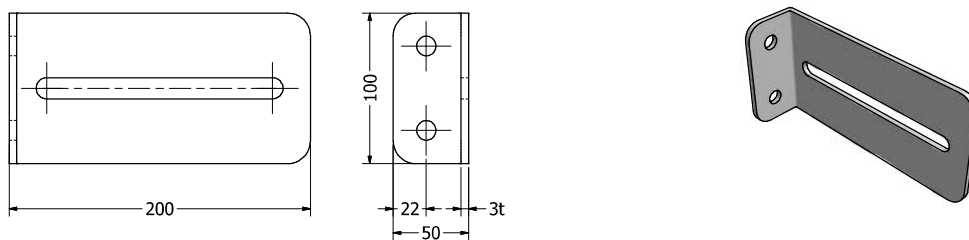
- 線槽吊夾 (HANGER CLAMP)
- 垂直線槽支撐架 (WALL SUPPORT)
- 壁架 (BRACKET)

線槽吊架安裝示意圖

1 線槽吊夾 (HANGER CLAMP)

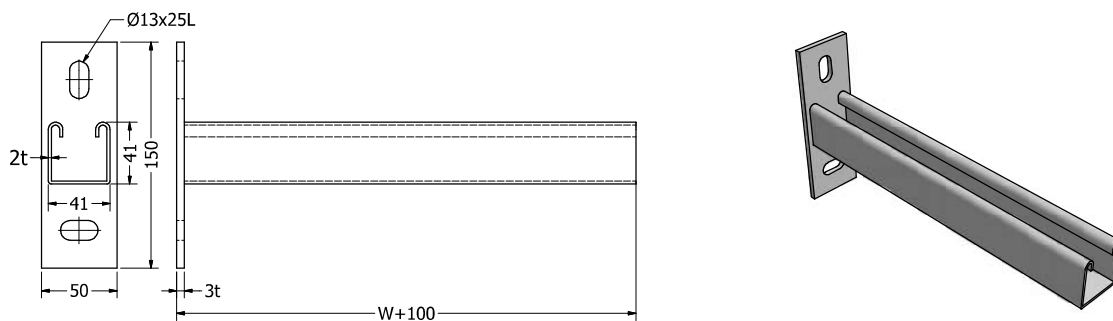


2 垂直線槽支撐架 (WALL SUPPORT)



- 材 質：不銹鋼板 SUS304
- 厚 度：3.0mm±0.2mm
- 表面處理：無
- MATERIAL：STAINLESS STEEL SUS304
- THICKNESS：3.0mm±0.2mm
- FINISH：NONE

3 壁架 (BRACKET)

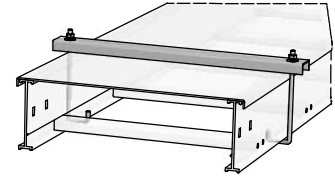
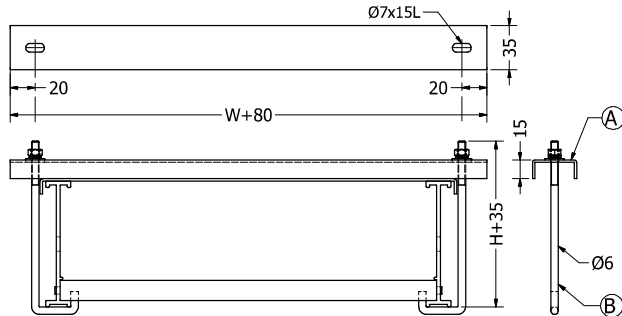


- 材 質：不銹鋼板 SUS304
- 厚 度：2.0mm±0.2mm
- 表面處理：無
- MATERIAL：STAINLESS STEEL SUS304
- THICKNESS：2.0mm±0.2mm
- FINISH：NONE

- 蓋板固定夾 (COVER CLAMP)
- 外側式蓋板固定片 (OUTSIDE COVER CLAMP C-TYPE)
- 側夾式線槽蓋板固定片 (E-TYPE COVER CLAMP)

1 蓋板固定夾 (COVER CLAMP)

蓋板夾安裝示意圖



A. 鋁製蓋板壓條

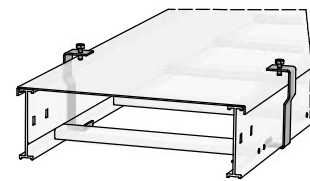
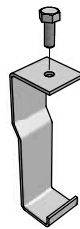
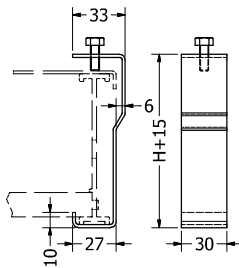
- 材 質：鋁合金 6063-T5
- 表面處理：陽極處理

B. 七字鉤釘

- 材 質：不銹鋼 SUS304
- 附 件：1/4"螺帽及墊圈

2 外側式蓋板固定夾 (OUTSIDE COVER CLAMP C-TYPE)

外側式蓋板夾安裝示意圖

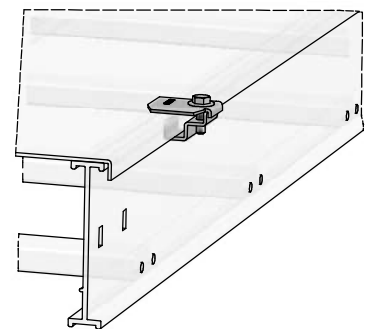
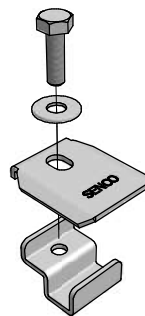
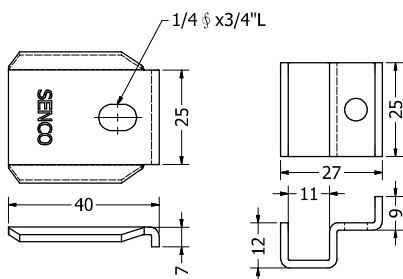


- 材 質：不銹鋼板 SUS304
- 厚 度：2.0mm±0.2mm
- 表面處理：無

- MATERIAL : STAINLESS STEEL SUS304
- THICKNESS : 2.0mm±0.2mm
- FINISH : NONE

3 側夾式線槽蓋板固定夾 (E-TYPE COVER CLAMP)

側夾式蓋板夾安裝示意圖



- 材 質：不銹鋼板 SUS304
- 厚 度：2.0mm±0.2mm
- 表面處理：無

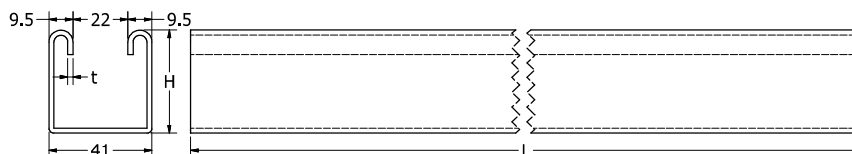
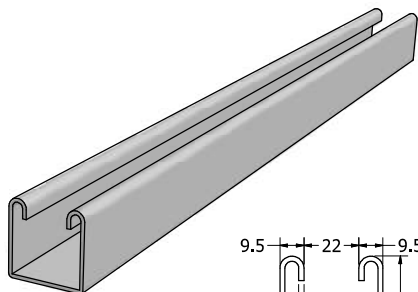
- MATERIAL : STAINLESS STEEL SUS304
- THICKNESS : 2.0mm±0.2mm
- FINISH : NONE

U型槽鐵 (U CHANNEL)

外側固定片-Z型 (OUTSIDE HOLD DOWN CLAMP Z-TYPE)

內側固定片 (INSIDE HOLD DOWN CLAMP)

1 U型槽鐵 (U CHANNEL)



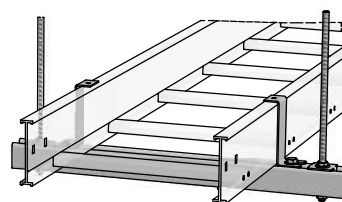
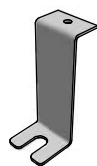
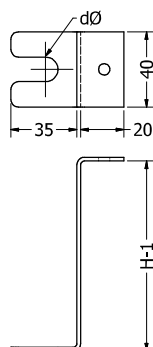
- 材 質：鍍鋅鋼板
- 厚 度：2.0mm±0.2mm
- 表面處理：無

- MATERIAL : GALVANIZED STEEL SHEET
- THICKNESS : 2.0mm±0.2mm
- FINISH : NONE

高(H)	厚度(t)
41	2.0
25	

2 外側固定片-Z型 (OUTSIDE HOLD DOWN CLAMP Z-TYPE)

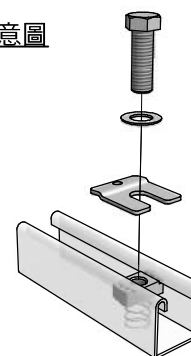
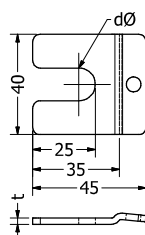
外側固定片安裝示意圖



- 材 質：不銹鋼板 SUS304
- 厚 度：2.0mm±0.2mm
- 表面處理：無
- MATERIAL : STAINLESS STEEL SUS304
- THICKNESS : 2.0mm±0.2mm
- FINISH : NONE

3 內側固定片 (INSIDE HOLD DOWN CLAMP)

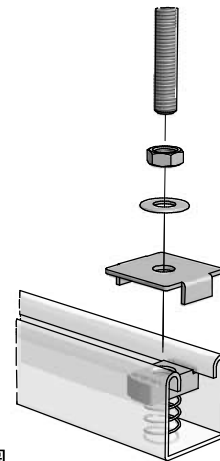
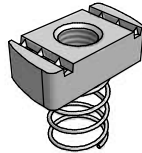
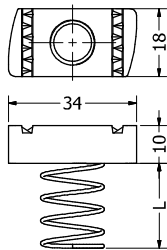
內側固定片安裝示意圖



- 材 質：不銹鋼板 SUS304
- 厚 度：2.5mm±0.2mm
- 表面處理：無
- MATERIAL : STAINLESS STEEL SUS304
- THICKNESS : 2.5mm±0.2mm
- FINISH : NONE

- 彈簧螺帽 (SPRING NUT)
- 全牙螺桿固定片 (THREADED ROD CLAMP)
- 全牙螺桿 (THREADED ROD)
- 接地銅片 (COPPER GROUNDING PIECES)
- 馬車螺絲 (SQUARE NECK BLOT)

1 彈簧螺帽 (SPRING NUT)

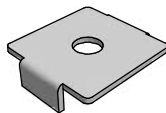
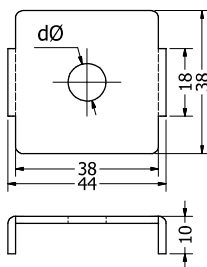


組裝示意圖

- 材 質：可鍛鑄鐵
- 表面處理：電鍍鋅
- 尺 寸：1/2"

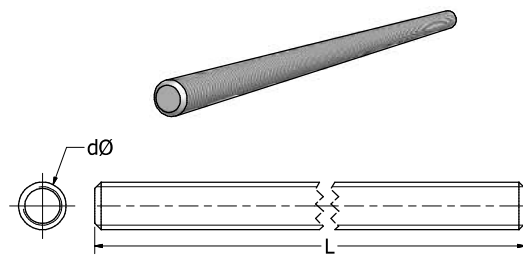
- MATERIAL : MALLEABLE STEEL IRON
- FINISH : ELECTRO GALVANIZED
- DIMENSION : 1/2"

2 全牙螺桿固定片 (THREADED ROD CLAMP)



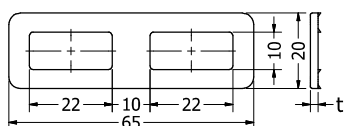
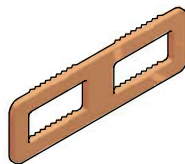
- 材 質：不銹鋼板 SUS304
- 厚 度：2.0mm±0.2mm
- 表面處理：無
- MATERIAL : STAINLESS STEEL SUS304
- THICKNESS : 2.0mm±0.2mm
- FINISH : NONE

4 全牙螺桿 (THREADED ROD)



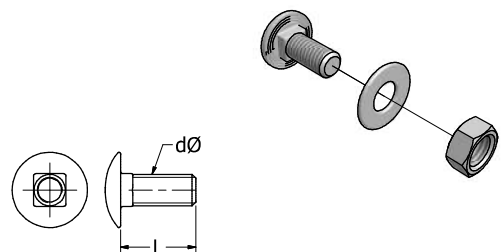
- 材 質：鐵
- 表面處理：電鍍鋅
- 尺 寸：1/2"
- MATERIAL : IRON
- FINISH : ELECTRO GALVANIZED
- DIMENSION : 1/2"

3 接地銅片 (COPPER GROUNDING PIECES)



- 材 質：銅
- 厚 度：2.0mm±0.2mm
- 表面處理：無
- MATERIAL : COPPER
- THICKNESS : 2.0mm±0.2mm
- FINISH : NONE

5 馬車螺絲 (SQUARE NECK BLOT)



- 材 質：不銹鋼 SUS304
- 尺 寸：5/16" x 3/4"L
- MATERIAL : STAINLESS STEEL SUS304
- DIMENSION : 5/16" x 3/4"L